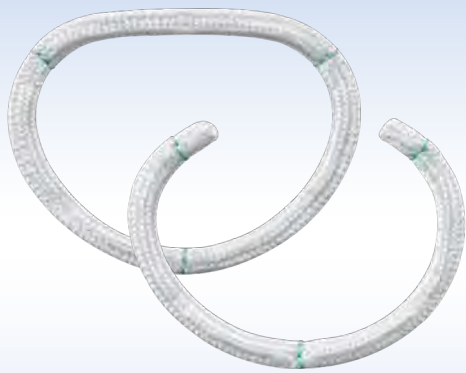


# MITRAL/TRICUSPID VALVE REPAIR FLEXIBLE SOLUTIONS



Simulus™ Flexible  
Annuloplasty Ring and Band



Duran AnCore™  
Annuloplasty Ring and Band



Simplici-T™  
Annuloplasty Band

# FOR NATURAL MOTION

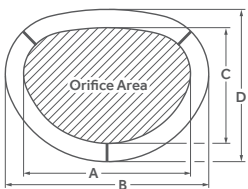
## Simulus™ Flexible Ring and Band

- Braided polyester material resists stretching and discourages crimping while enabling low resistance, smooth needle penetration along the entire width of ring or band.<sup>1,2</sup>
- Easy manipulation in varied surgical approaches, from open heart and minimally invasive to robotic<sup>1</sup>
- Trigone and midline posterior markers assist in precise suture placement and positioning of the ring or band.
- Clear holder provides for improved visibility and a one-cut release.
- Malleable handle allows for ease of use in reaching valve annulus — handle is removable to easily accommodate different implant styles.



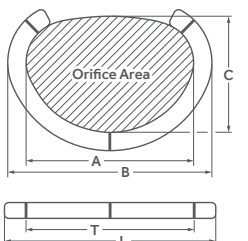
## Simulus™ Flexible Product Specifications

### Simulus Flexible Annuloplasty Ring Model 700FF



Ring Size (mm)	Order Number	A (mm)	B (mm)	C (mm)	D (mm)	Orifice Area (mm <sup>2</sup> )
23	700FF23	24	30	17.1	23.1	325
25	700FF25	27	33	19.5	25.5	418
27	700FF27	29	35	20.9	26.9	481
29	700FF29	31	37	22.3	28.3	550
31	700FF31	33	39	23.8	29.8	622
33	700FF33	35	41	25.2	31.2	700
35	700FF35	37	43	26.6	32.6	781
37	700FF37	39	45	28.0	34.0	867
39	700FF39	41	47	29.4	35.4	958

### Simulus Flexible Annuloplasty Band Model 700FC



Band Size (mm)	Order Number	A (mm)	B (mm)	C (mm)	T Straight Length (mm)	L Straight Length Between Trigone Markers (mm)	Orifice Area (mm <sup>2</sup> )
23	700FC23	24	30	17.1	59	53	325
25	700FC25	27	33	19.5	63	57	418
27	700FC27	29	35	20.9	67	61	481
29	700FC29	31	37	22.3	73	65	550
31	700FC31	33	39	23.8	77	69	622
33	700FC33	35	41	25.2	81	73	700
35	700FC35	37	43	26.6	85	77	781
37	700FC37	39	45	28.0	89	81	867
39	700FC39	41	47	29.4	93	85	958

## Simulus Flexible Annuloplasty Accessories

Accessories	Order Number
Simulus Flexible Ring/Band Accessory Kit	750
Simulus Flexible Ring/Band Sizer Set (polysulfone)	751PS
Simulus Flexible Ring/Band Robotic Accessory Kit	755
Annuloplasty Handles, 254 mm length (2)	752
Annuloplasty Handle, 375 mm length (1)	752XL



# DESIGNED TO ACCOMMODATE

## Duran AnCore™ Ring and Band

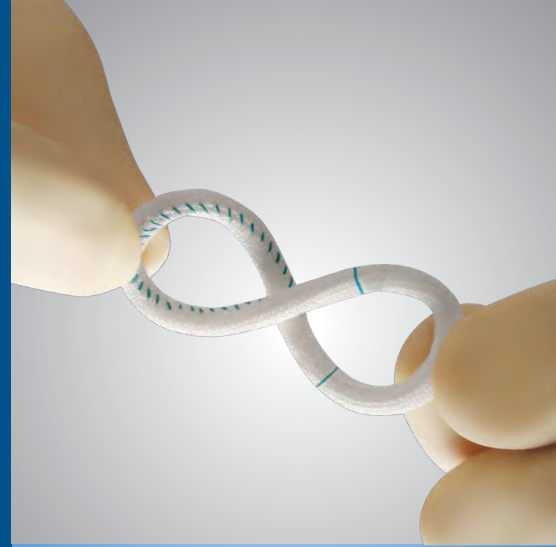
- Preserves natural physiologic motion of the annulus throughout the cardiac cycle<sup>3</sup>
- Open two-piece holder
- Patented Chordal Guide facilitates replacement of the mitral valve chordae tendineae

### Duran AnCore Ring

- Allows annular mobility during diastole while maintaining annular support during systole<sup>3</sup>
- Adapts to changes in the mitral orifice area throughout cardiac cycle<sup>3</sup>

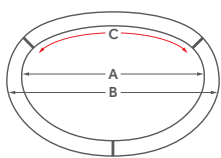
### Duran AnCore Band

- Focused posterior support
- Band length extends beyond the trigones, providing secure suturing to the trigones



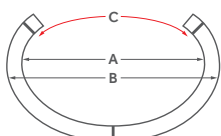
## Duran AnCore™ Product Specifications

### Duran AnCore Annuloplasty Ring Model 620R



Ring Size (mm)	Order Number	A (mm)	B (mm)	C (mm)
23	620RG23	25.8	31.8	23
25	620RG25	27.8	33.8	25
27	620RG27	29.8	35.8	27
29	620RG29	31.7	37.7	29
31	620RG31	33.8	39.8	31
33	620RG33	35.8	41.8	33
35	620RG35	37.7	43.7	35

### Duran AnCore Annuloplasty Band Model 620B



Band Size (mm)	Order Number	A (mm)	B (mm)	C (mm)	D (mm)
23	620BG23	25.8	31.8	23	59
25	620BG25	27.8	33.8	25	63
27	620BG27	29.8	35.8	27	67
29	620BG29	31.7	37.7	29	73
31	620BG31	33.8	39.8	31	77
33	620BG33	35.8	41.8	33	81
35	620BG35	37.7	43.7	35	85

## Duran AnCore Annuloplasty Accessories

Accessories	Order Number
Duran AnCore Sizer Set (7 sizers)	7620S
Annuloplasty Handle (216 mm length)	7620H/7686
Annuloplasty Handle (373 mm length)	7620HL/7686XL
Duran AnCore Accessory Tray	T7660



# CUSTOM FIT FOR EVERY PATIENT

## Simplici-T™ Band

- Implanted band length is determined by the annular size and degree of plication of the annular tissue.
- Graduated markings can be used to measure the implanted band length — band comes in length of 100 mm.



## Simplici-T™ Product Specifications

### Simplici-T Annuloplasty Band Model 670

Description	Order Number
Simplici-T Annuloplasty Band	607100

#### References

1. Cheng W, Fontana G, De Robertis M, et al. Is robotic mitral valve repair a reproducible approach? J Thorac Cardiovasc Surg 2010;139:628-33.
2. Laboratory Report. ATS Simulus fully flexible annuloplasty ring/band, implantation needle penetration test. Document 408003.
3. Okada Y, Shomura T, Yamaura Y, Yoshikawa J. Comparison of the Carpentier and Duran prosthetic rings used in mitral reconstruction. Ann Thorac Surg 1995;59:658-63.

**Simulus Flexible Annuloplasty System | Indications:** The Simulus flexible annuloplasty ring and band are for use in those patients undergoing surgery of diseased or damaged mitral or tricuspid valves in whom the surgeon determines that the valve can be preserved by employing the appropriate surgical repair. The annuloplasty ring and band provide support for the mitral or tricuspid annulus and restrict expansion of the annulus. **Contraindications:** Severe, generalized or localized bacterial endocarditis, heavily calcified valves, greatly dilated annulus (not reducible by standard techniques), severe valvular dysfunction (not correctable by standard techniques), valvular retraction with severely reduced mobility, congenital malformations with lack of valvular tissue. **Warnings/Precautions/Adverse Events:** Only physicians who have received proper training in valve repair should use this device. Adverse events can include: thromboembolic events, dehiscence, hemolysis, stenosis, residual incompetence, heart block, endocarditis, systolic anterior motion, left and right ventricular outflow tract obstruction, anticoagulant-related bleeding or hemorrhage.

**Simplici-T Annuloplasty System | Indications:** This device is indicated for the reconstruction and/or remodeling of pathological mitral and tricuspid valves. Appropriate repair and annular remodeling may correct combined valvular insufficiency and stenosis. **Contraindications:** Heavily calcified valves, valvular retraction with severely reduced mobility, active bacterial endocarditis. **Warnings/Precautions/Adverse Events:** Only physicians who have received proper training in valve repair should use this device. Adverse events can include: thromboembolic events, band dehiscence, hemolysis, stenosis, heart block, endocarditis, systolic anterior motion, left ventricular outflow tract obstruction, anticoagulant-related bleeding or hemorrhage, uncorrected or recurrent regurgitation, low cardiac output, thrombosis, damage to coronary arteries.

**Duran AnCore Annuloplasty Ring and Band | Indications:** This device is indicated for the reconstruction and/or remodeling of pathological mitral and tricuspid valves. Appropriate repair and annular remodeling may correct combined valvular insufficiency and stenosis. **Note:** The Chordal Guide feature of the Duran AnCore Ring/Band with Chordal Guide is indicated only for chordal replacement surgery of pathological mitral valves. **Contraindications:** Heavily calcified valves, valvular retraction with severely reduced mobility, active bacterial endocarditis. **Warnings/Precautions/Adverse Events:** Only physicians who have received proper training in valve repair should use this device. Adverse events can include: thromboembolic events, dehiscence, hemolysis, stenosis, residual incompetence, heart block, endocarditis, systolic anterior motion, left ventricular outflow tract obstruction, anticoagulant-related bleeding or hemorrhage.

**Caution:** Federal law (USA) restricts these devices to sale by or on the order of a physician. For a listing of indications, contraindications, precautions, warnings, and potential adverse events, please refer to the Instructions for Use.

For countries that use eIFUs, consult instructions for use at this website [www.medtronic.com/manuals](http://www.medtronic.com/manuals). **Note:** Manuals can be viewed using a current version of any major internet browser.

## Medtronic

710 Medtronic Parkway  
Minneapolis, MN 55432-5604  
USA  
Tel: (763) 514-4000  
Fax: (763) 514-4879  
Toll-free: (800) 328-2518

**LifeLine**  
**CardioVascular Technical Support**  
Tel: (877) 526-7890  
Tel: (763) 526-7890  
Fax: (763) 526-7888  
[rs.cstechsupport@medtronic.com](mailto:rs.cstechsupport@medtronic.com)

[medtronic.com](http://medtronic.com)

©2017 Medtronic.  
All rights reserved.  
Medtronic, Medtronic logo  
and Further, Together are  
trademarks of Medtronic.  
All other brands are trademarks  
of a Medtronic company.  
UC201800372 EN 07/2017