

# 2024 Peripheral Vascular Diagnostic & Intervention Coding Sheet



**Reimbursement  
Information Line**  
Tel: 877.347.9662

Patient:	Date of Birth:	Date of Procedure:
Refer.MD:	DX:	

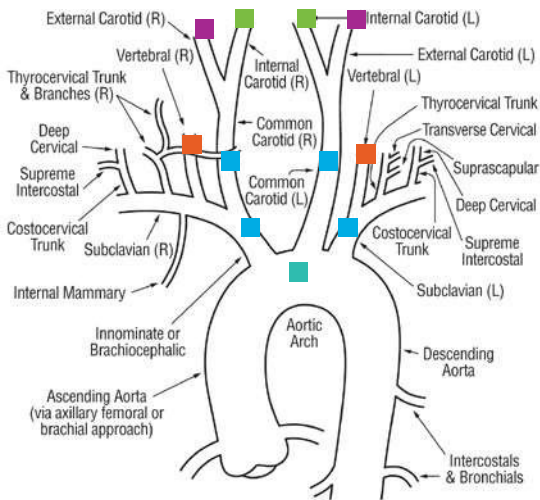
CPT® codes, descriptions and other data only are copyright 2023 American Medical Association. All Rights Reserved. Applicable FARS/HHSARS apply. Fee schedules, relative value units, conversion factors and/or related components aren't assigned by the AMA, aren't part of CPT®, and the AMA isn't recommending their use. The AMA doesn't directly or indirectly practice medicine or dispense medical services. The AMA assumes no liability for data contained or not contained herein.

NON-SELECTIVE CATHETERIZATION	
Carotid or vertebral, by direct puncture of either vessel	36100
Extremity artery, upper or lower, by direct puncture	36140
Aorta, translumbar, by direct puncture	36160
Aorta, catheter (by peripheral puncture, eg, femoral)	36200
SELECTIVE CATHETERIZATION	
1st order selective, thoracic or brachiocephalic	36215
2nd order selective thoracic or brachiocephalic	36216
3rd order selective thoracic or brachiocephalic	36217
Addl 2nd or 3rd order thoracic or brachiocephalic	+36218
1st order selective abdominal, pelvic, lower extremity	36245
2nd order selective abdominal, pelvic, lower extremity	36246
3rd order selective abdominal, pelvic, lower extremity	36247
Addl 2nd or 3rd order abdominal, pelvic, lower extremity	+36248
DIAGNOSTIC ANGIOGRAMS	
Thoracic aortogram	75605-26
Abdominal aortogram	75625-26
Abdominal aortogram w bilateral run-off	75630-26
Extremity angiogram, unilateral	75710-26
Extremity angiogram, bilateral	75716-26
Visceral angiogram (eg, celiac, SMA, IMA)	75726-26
Pelvic angiogram (eg, internal iliac)	75736-26
Internal mammary angiogram	75756-26
Selective angiogram, each addl vessel after basic	+75774-26
DIAGNOSTIC BUNDLED RENAL ANGIOGRAMS (catheter placement + vessels imaged)	
Selective cath, 1 <sup>st</sup> order, renal aortogram, unilateral	36251
Selective cath, 1 <sup>st</sup> order, renal aortogram, bilateral	36252
Superselective cath 2nd order/up, renal aortogram, uni	36253
Superselective cath, 2nd order/up, renal aortogram, bil	36254
MISCELLANEOUS	
Non-selective iliac/femoral angiogram w heart cath	G0278
Placement of closure device at access site	G0269

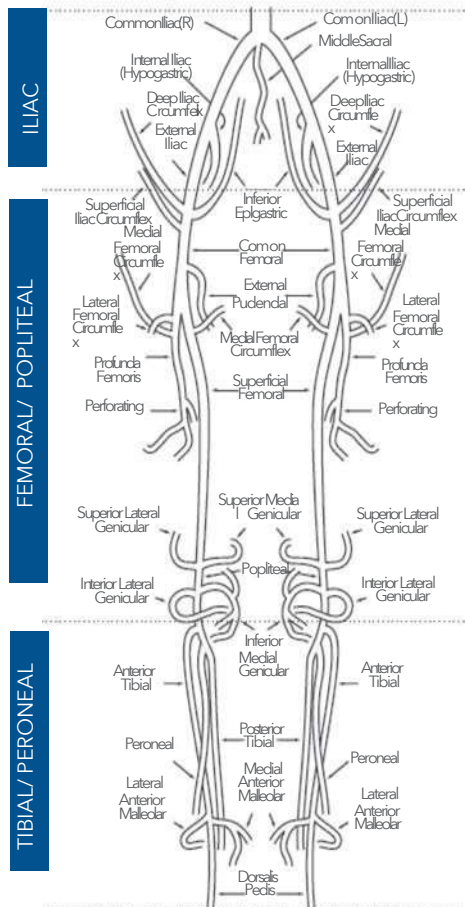
CAROTID ARTERY STENTING, CERVICAL AND INTRATHORACIC	
Carotid stenting, cervical carotid, w distal embolic protection	37215
Carotid stenting, cervical carotid, wo distal embolic protection	37216
Carotid stenting, intrathoracic common carotid or innominate, retrograde, w/ open cervical carotid exposure	37217
Carotid stenting, intrathoracic common carotid or innominate, antegrade approach	37218
TRANSLUMINAL ANGIOPLASTY, OTHER ARTERY or VEIN	
PTA (except lower extremity, intracranial, coronary, pulmonary artery, dialysis circuit) initial artery	37246
PTA (except lower extremity, intracranial, coronary, pulmonary artery, dialysis circuit) each addl artery	+37247
PTA (except dialysis circuit), initial vein	37248
PTA (except dialysis circuit), each addl vein	+37249
TRANSLUMINAL ATHERECTOMY, INTRA-ABDOMINAL and UPPER EXTREMITY	
Peripheral atherectomy, renal artery	0234T
Peripheral atherectomy, visceral artery, each vessel	0235T
Peripheral atherectomy, abdominal aorta	0236T
Peripheral atherectomy, brachiocephalic trunk or branches, each vessel	0237T
TRANSLUMINAL THROMBECTOMY, ARTERIAL	
Primary percutaneous mechanical thrombectomy, noncoronary, non-intracranial, initial vessel	37184
Primary percutaneous mechanical thrombectomy, noncoronary, non-intracranial, each addl vessel within same family	+37185
Secondary percutaneous thrombectomy (eg, snare basket, suction), w primary procedure other than thrombectomy	+37186
ENDOVASCULAR IVC FILTER PROCEDURES	
Insertion of IVC filter, includes vessel access, selection and imaging	37191
Repositioning of IVC filter, includes vessel access, selection and imaging	37192
Retrieval (removal) of IVC filter, includes vessel access, selection and imaging	37193
RETRIEVAL, INTRAVASCULAR FOREIGN BODY	
Transcatheter retrieval, percutaneous, of intravascular foreign body (fractured venous or arterial cath)	37197
TRANSCATHETER INFUSION FOR THROMBOLYSIS, ARTERIAL AND VENOUS	
Arterial infusion for thrombolysis, other than coronary or intracranial, initial treatment day	37211
Venous infusion for thrombolysis, initial treatment day	37212
Arterial or venous infusion for thrombolysis, continued on subsequent day during course of thrombolytic therapy	37213
Arterial or venous infusion for thrombolysis, cessation of thrombolysis incldg removal of catheter and vessel closure	37214
TRANSCATHETER PLACEMENT, INTRAVASCULAR STENT	
Stenting (except lower extremity, cervical carotid, extracranial vertebral or intrathoracic carotid, intracranial, or coronary), incldg angioplasty within same vessel, initial artery	37236
- each addl artery	+37237
Stenting, incldg angioplasty within same vessel, initial vein	37238
- each addl vein	+37239
OCCLUSION AND EMBOLIZATION	
Vascular embolization or occlusion, venous, other than hemorrhage	37241
Vascular embolization or occlusion, arterial, other than hemorrhage or tumor	37242
Vascular embolization or occlusion, for tumors, organ ischemia, or infarction	37243
Vascular embolization or occlusion, for arterial or venous hemorrhage or lymphatic extravasation	37244

ULTRASOUND GUIDANCE	
Ultrasound guidance for vascular access	+76937
INTRAVASCULAR ULTRASOUND, PERIPHERAL	
IVUS (noncoronary), initial vessel	+37252
IVUS (noncoronary), each addl vessel	+37253
MODERATE SEDATION	
Sedation given by physician performing procedure, initial 15 min intra-svc time; < 5 years old	99151
Sedation given by physician performing procedure, initial 15 min intra-svc time; >5 years old	99152
+ each addl 15 min intra-service time	+99153
Sedation given by other physician not performing procedure, initial 15 min intra-svc time; < 5 years old	99155
Sedation given by other physician not performing procedure, initial 15 min intra-svc time; > 5 years old	99156
+ each addl 15 mi. intra-service time	+99157

## NORMAL CAROTID ANATOMY WITH CATHETER POSITION FOR CODE ASSIGNMENT



## LOWER EXTREMITY ANATOMY



DIAGNOSTIC BUNDLED CAROTID ANGIOGRAMS (catheter placement + vessels imaged)		
+36228	Selective catheterization of each intracranial branch of internal carotid or vertebral, unilateral, with angiography of selected vessel (eg, MCA, ACA, PICA) (use with 36223, 36224, 36225, or 36226)	
+36227	Selective catheterization of <b>external carotid</b> , unilateral, with external carotid angiography (use with 36222, 36223, or 36224)	
Note: Code +36228 can be reported no more than twice per side.		
36226	Selective catheterization of <b>vertebral</b> , unilateral, with vertebral/vertebrobasilar angiography	
36225	Selective catheterization of <b>subclavian or innominate</b> , unilateral, with vertebral/vertebrobasilar angiography	
Note: For the same side, only one code may be assigned from the range of 36225-36226.		
36224	Selective catheterization of <b>internal carotid</b> , unilateral, with intracranial/cerebral carotid angiography	
36223	Selective catheterization of <b>common carotid or innominate</b> , unilateral, with intracranial/cerebral carotid angiography (including extracranial when performed)	
36222	Selective catheterization of <b>common carotid or innominate</b> , unilateral, with extracranial/cervical carotid angiography	
Note: For the same side, only one code may be assigned from the range 36222-36224.		
36221	<b>Non-selective</b> catheterization of thoracic aorta with cervicocerebral angiography of all extracranial carotid, vertebral, and/or intracranial vessels, unilateral or bilateral	
Note: Code 36221 is included in all other angiographies and is not coded separately with 36222-36226.		

## ENDOVASCULAR LOWER EXTREMITY INTERVENTIONS

ILIAC TERRITORY		
	Primary	Add-on
37220 - PTA, iliac artery, initial vessel, unilateral		+37222 - PTA, iliac artery, each addl ipsilateral iliac vessel (use with 37220, 37221)
37221 - Stent, iliac artery, w/wo PTA in same vessel, unilateral		+37223 - Stent, iliac artery, each addl ipsilateral iliac vessel, w/wo PTA in same vessel (use with 37221)
0238T - Atherectomy, iliac artery		
FEMORAL/ POPLITEAL TERRITORY		
37224 - PTA, femoral/ popliteal artery, unilateral		There are no add-on codes for additional vessels treated in the femoral/popliteal territory. Because only 1 service is reported when 2 lesions are treated in this territory, report the most complex service (eg, use 37227 if a stent is placed for 1 lesion and an atherectomy is performed on a 2nd lesion).
37225 - Atherectomy, femoral/ popliteal artery, w/wo PTA, in same vessel, unilateral		
37226 - Stent, femoral/popliteal artery, w/wo PTA in same vessel, unilateral		
37227 - Stent and atherectomy, femoral/ popliteal artery, w/wo PTA in same vessel, unilateral		
TIBIAL/ PERONEAL TERRITORY		
37228 - PTA, tibial/ peroneal artery, initial vessel, unilateral		+37232 - PTA, tibial/ peroneal artery, each addl vessel (use with 37228-37231)
37229 - Atherectomy, tibial/ peroneal artery, w/wo PTA in same vessel, unilateral		+37233 - Atherectomy, tibial/ peroneal, each addl vessel, w/wo PTA in same vessel
37230 - Stent, tibial/ peroneal artery, w/wo PTA in same vessel, unilateral		+37234 - Stent, tibial/ peroneal artery, each addl vessel, w/wo PTA in same vessel
37231 - Stent and atherectomy, tibial/ peroneal artery, w/wo PTA in same vessel, unilateral		+37235 - Stent and atherectomy, tibial/ peroneal artery, each addl vessel, w/wo PTA in same vessel

CPT® codes, descriptions and other data only are copyright 2023 American Medical Association. All Rights Reserved. Applicable FARS/HSARS apply. Fee schedules, relative value units, conversion factors and/or related components aren't assigned by the AMA, aren't part of CPT®, and the AMA isn't recommending their use. The AMA doesn't directly or indirectly practice medicine or dispense medical services. The AMA assumes no liability for data contained or not contained herein. Code descriptions have been abbreviated in this document. For specific AMA descriptions of current CPT® coding, please refer to the most recent version of the CPT® Coding Book. Medtronic provides this information for your convenience only. It does not constitute legal advice or a recommendation regarding clinical practice. Information provided is gathered from third-party sources and is subject to change without notice due to frequently changing laws, rules, and regulations. As a result, Medtronic does not represent or guarantee that this information is complete, accurate, or applicable to any particular patient or third-party payer or guarantors payment. The provider has the responsibility to determine medical necessity and to submit appropriate documentation, codes and charges for care provided. Medtronic makes no guarantee that the use of this information will prevent differences of opinion or disputes with Medicare or other payers as to the correct form of billing or the amount that will be paid to providers of service. Please contact your Medicare contractor, other payers, reimbursement specialists and/or legal counsel for interpretation of coding, coverage and payment policies and any applicable laws or regulations that may apply. This document provides assistance for FDA approved or cleared indications. Where reimbursement is sought for use of a product that may be inconsistent with, or not expressly specified in, the FDA cleared or approved labeling (e.g., instructions for use, operator's manual or package insert), consult with your billing advisors or payers on handling such billing issues. Some payers may have policies that make it inappropriate to submit claims for such items or related service. For more information, contact the Cardiovascular Health Economics Policy & Reimbursement Team.